

True Lumen

F54W T5/850/HO High Light Output Lamp Specifications

FEATURES

- Energy Saving
- Hi Lumen
- Extended Life
- High Quality CRI

PHYSICAL CHARACTERISTICS

Bulb Designation	T5
Nominal Bulb Diameter (in.)	0.625
Max Base Face to Base Face (in.)	45.23
Min Base to End of Opposing Pin (in.)	45.42
TCLP Compliant	Yes
Max Bulb Diameter (in.)	0.669
Base Type	G5 Min
Max Base to End of Opposing Pin (in.)	45.51
Max (Pin to Pin)	45.8

ELECTRICAL CHARACTERISTICS

Nominal Lamp Watts	54
Nominal Lamp Operating Current (mA)	460
Minimum Starting Temp (deg C)	-20
Nominal Lamp Volts	117
Nominal Lamp Operating Frequency (kHz)	>20

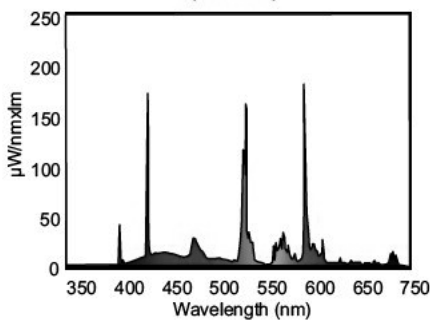


PHOTOMETRIC CHARACTERISTICS

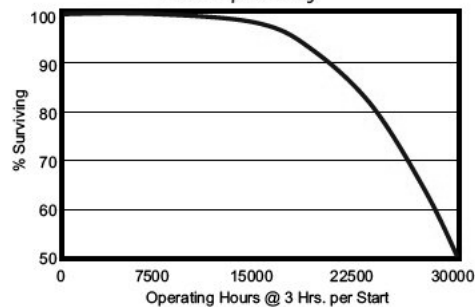
Reference - Initial Lumens	5000
Mean Lumens (40% Rated Life)	4600
Avg. Rate Life (hrs) 3hr cycle - PS Ballast	24,000
Avg. Rate Life (hrs) 12hr cycle - PS Ballast	30,000
Nominal Efficacy (Lumens/Watts) - Initial	90
Color Rendering Index (CRI)	84

Quantity/CTN: 30

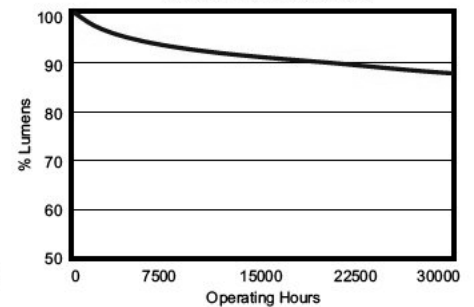
Spectral Power Distribution
(5000K)



Life Expectancy



Lumen Maintenance



SUNPARK ELECTRONICS

16200 S. Figueroa Street, Gardena CA 90248
 ph 310.324.8880 • fax 310.324.4020
 email info@sunpkco.com
 www.sunparkelectronics.com